

## Strontium Chromate

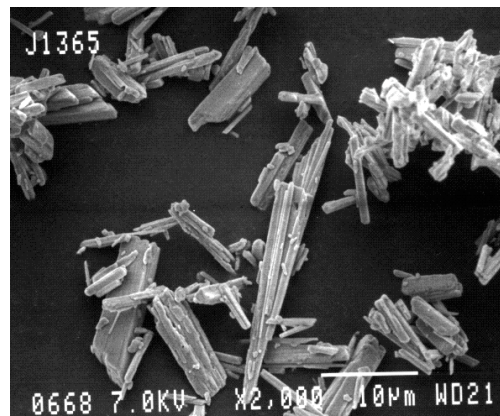
Pigment Yellow 32 • Color Index No. 77839 • CAS 7789-06-2

### Micronized Strontium Chromate J1365

#### Description

Strontium Chromate J1365 is a yellow corrosion inhibiting pigment (chemical formula  $\text{SrCrO}_4$ ) used in epoxy, coil, aircraft, and certain waterborne primer coatings. It is designed to be used in coating systems where Zinc Chromate has too much solubility and Basic Zinc Chromate has too little solubility.

Reference Data: ASTM D1649. Analysis Methods: ASTM D1845. Used in the following specification coatings: MIL-P-23377E.



SEM x2000

#### Composition/Typical Properties

Strontium content (%Sr)	43.0
Chromate content (% $\text{CrO}_3$ )	49.0
Oil Absorption (g/100g)	16
Weight per Gallon (lbs)	31.6
Specific Gravity ( $\text{g/cm}^3$ )	3.8
325 Mesh Retention (%)	<0.01
Water Soluble Salts (%)	<0.2
Acid Insolubles (%)	<0.1
Ignition Loss (%)	1
Moisture (%)	<1.0
pH	8.5
Hegman Grind	5
Particle Shape	Needle

*These values are provided as general information only. They are approximate values for reference. Not all of the above specifications are utilized in our standard QC procedures for purity, particle characteristics and consistency.*